

FIG. 1 - LBM 1000 SERIES METERS 8" FLANGES - DIMENSIONS

Right Hand Discharge Only - Flow Rate: 150-1500 Imp. Gal./min. (40-405m<sup>3</sup>/hr.)

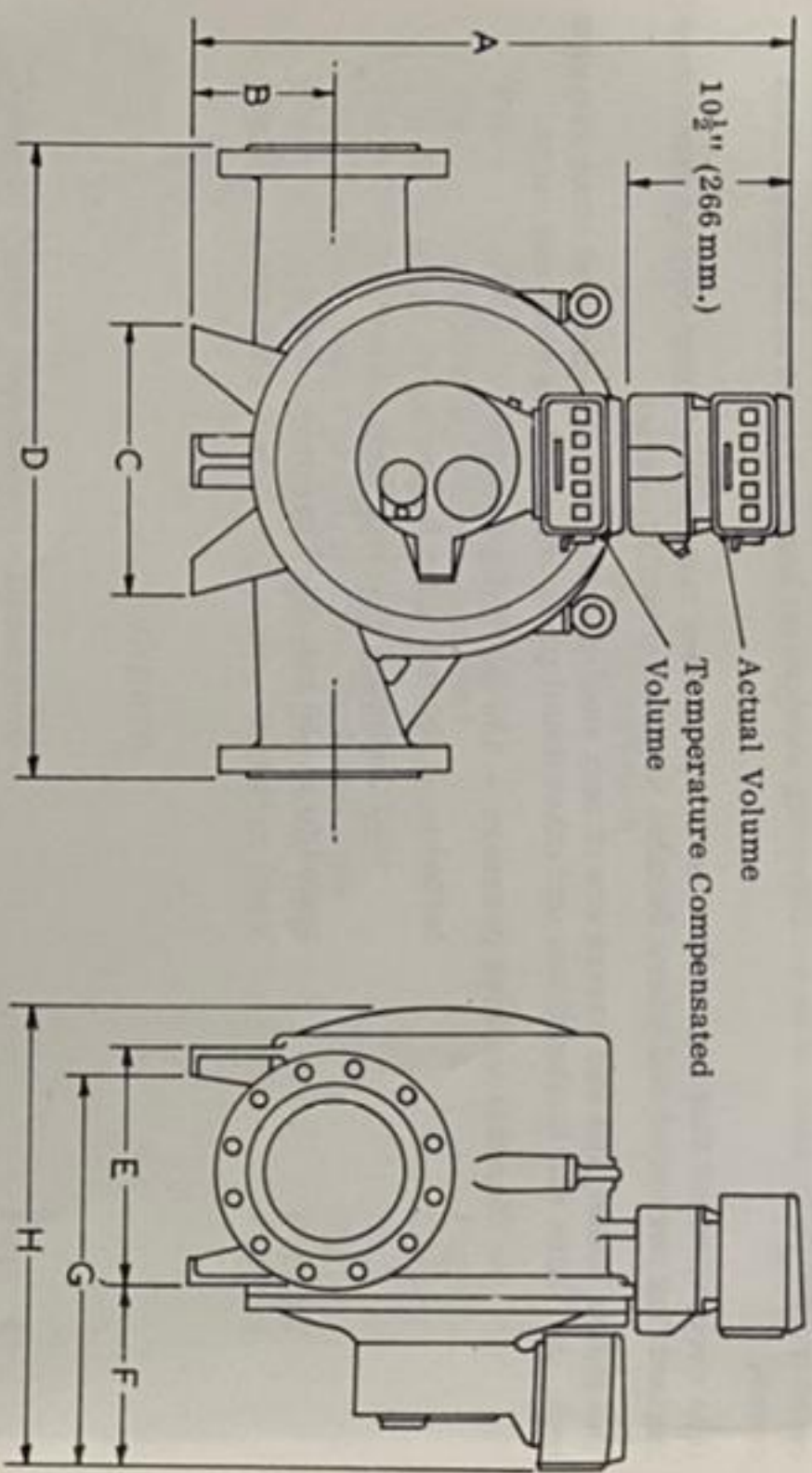


Diagram shows temperature compensator fitted with counters for both actual and compensated volume.  
On single read-out meters (i.e. one counter only) the counter is fitted on the front face of the meter.

	A	B	C	D	E	F	G	H
Inches	35 <sup>27</sup> / <sub>32</sub>	8 <sup>1</sup> / <sub>8</sub>	18	40	15 <sup>1</sup> / <sub>16</sub>	11 <sup>7</sup> / <sub>16</sub>	25	28 <sup>1</sup> / <sub>8</sub>
Millimetres	907	206	457	1016	384	291	635	714

WEIGHT - 1000 lbs. (454 kg.)

FLANGES

FLANGE DRILLINGS	No. of Holes	BOLT HOLE DIAMETER		P. C. D.		FLANGE INTERNAL DIA.		FLANGE OUTSIDE DIA.	
		Ins.	mm.	Ins.	mm.	Ins.	mm.	Ins.	mm.
ASA. 150	8	7/8	22	11 <sup>3</sup> / <sub>4</sub>	298	8	203	13 <sup>1</sup> / <sub>2</sub>	343
ASA. 300	12	1	25	13	330	8	203	15	381

FLANGES CONFORM TO BS. 1560/1958 - CLASS 150 or CLASS 300 RF.

FIG. 2 - LBM 3000 SERIES METERS 10" FLANGES - DIMENSIONS

Left or Right-Hand Discharge - Flow Rate: 300-3000 Imp. Gal./min. (80-810m<sup>3</sup>/hr.)

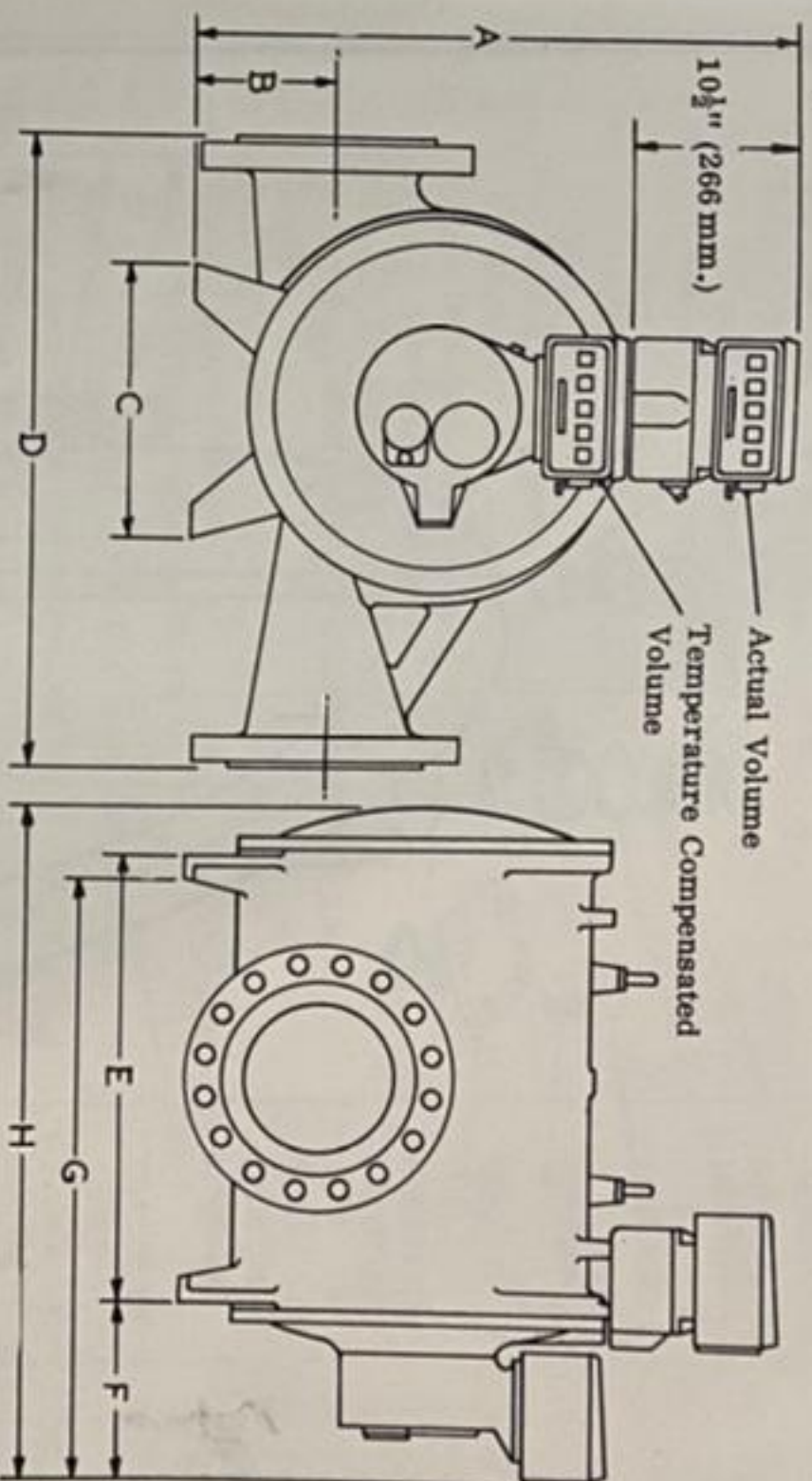


Diagram shows temperature compensator fitted with counters for both actual and compensated volume.  
On single read-out meters (i.e. one counter only) the counter is fitted on the front face of the meter.

	A	B	C	D	E	F	G	H
Inches	38 <sup>9</sup> / <sub>32</sub>	9 <sup>3</sup> / <sub>8</sub>	18	41	29 <sup>3</sup> / <sub>4</sub>	11 <sup>9</sup> / <sub>16</sub>	32	37
Millimetres	973	235	457	1041	745	294	812	939

WEIGHT - 1,680 lbs. (763 kg.)

FLANGES

FLANGE DRILLINGS	No. of Holes	BOLT HOLE DIAMETER		P. C. D.		FLANGE INTERNAL DIA.		FLANGE OUTSIDE DIA.	
		Ins.	mm.	Ins.	mm.	Ins.	mm.	Ins.	mm.
ASA. 150	12	1	25	14 <sup>1</sup> / <sub>2</sub>	362	10	254	16	406
ASA. 300	16	1 <sup>1</sup> / <sub>8</sub>	28	15 <sup>1</sup> / <sub>2</sub>	387	10	254	17 <sup>1</sup> / <sub>2</sub>	445

FLANGES CONFORM TO BS. 1560/1958 - CLASS 150 or CLASS 300RF.

FIG. 3 - METER FRONT COVER ASSEMBLY EXPLODED VIEW (Refer to Table 3)

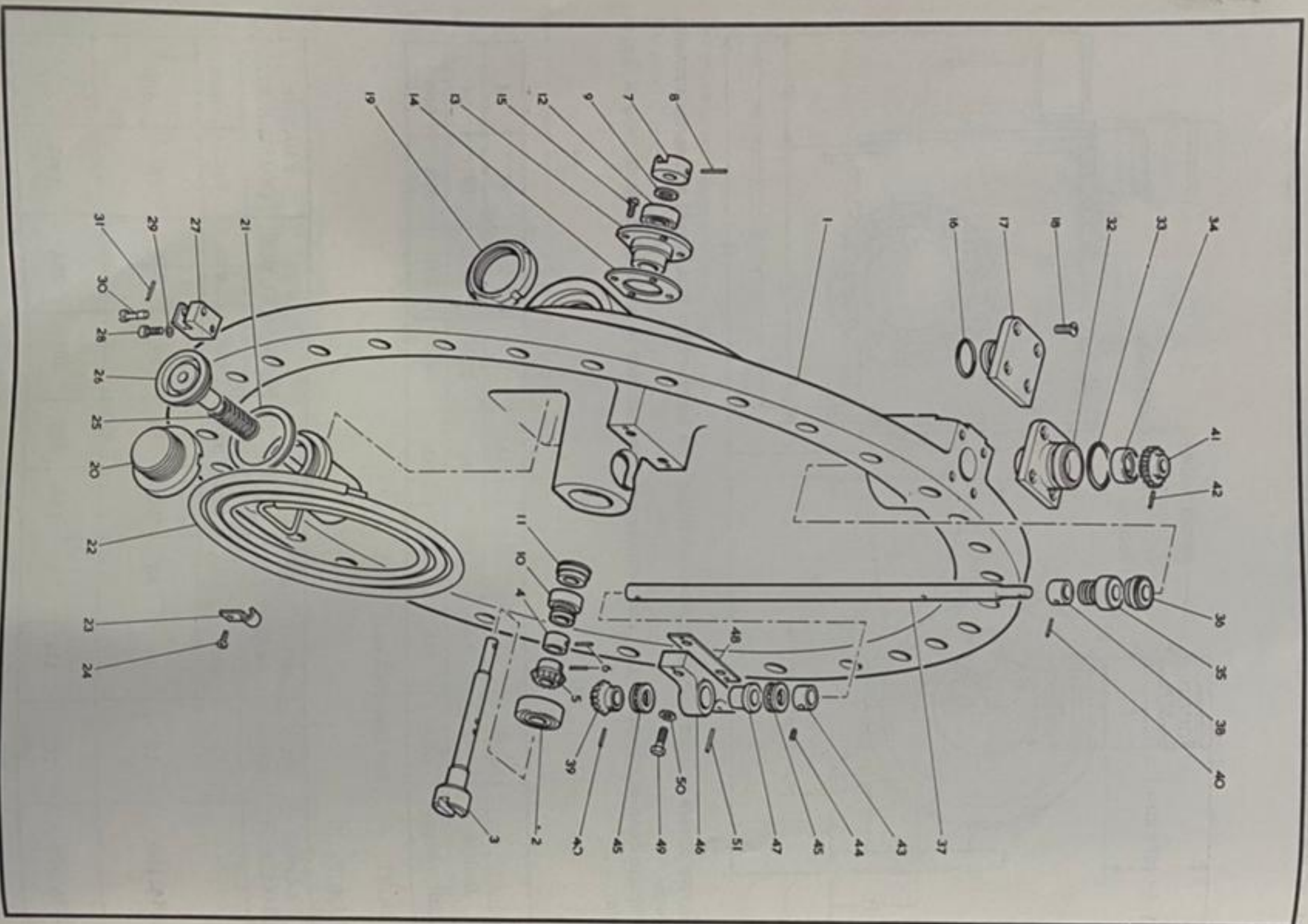
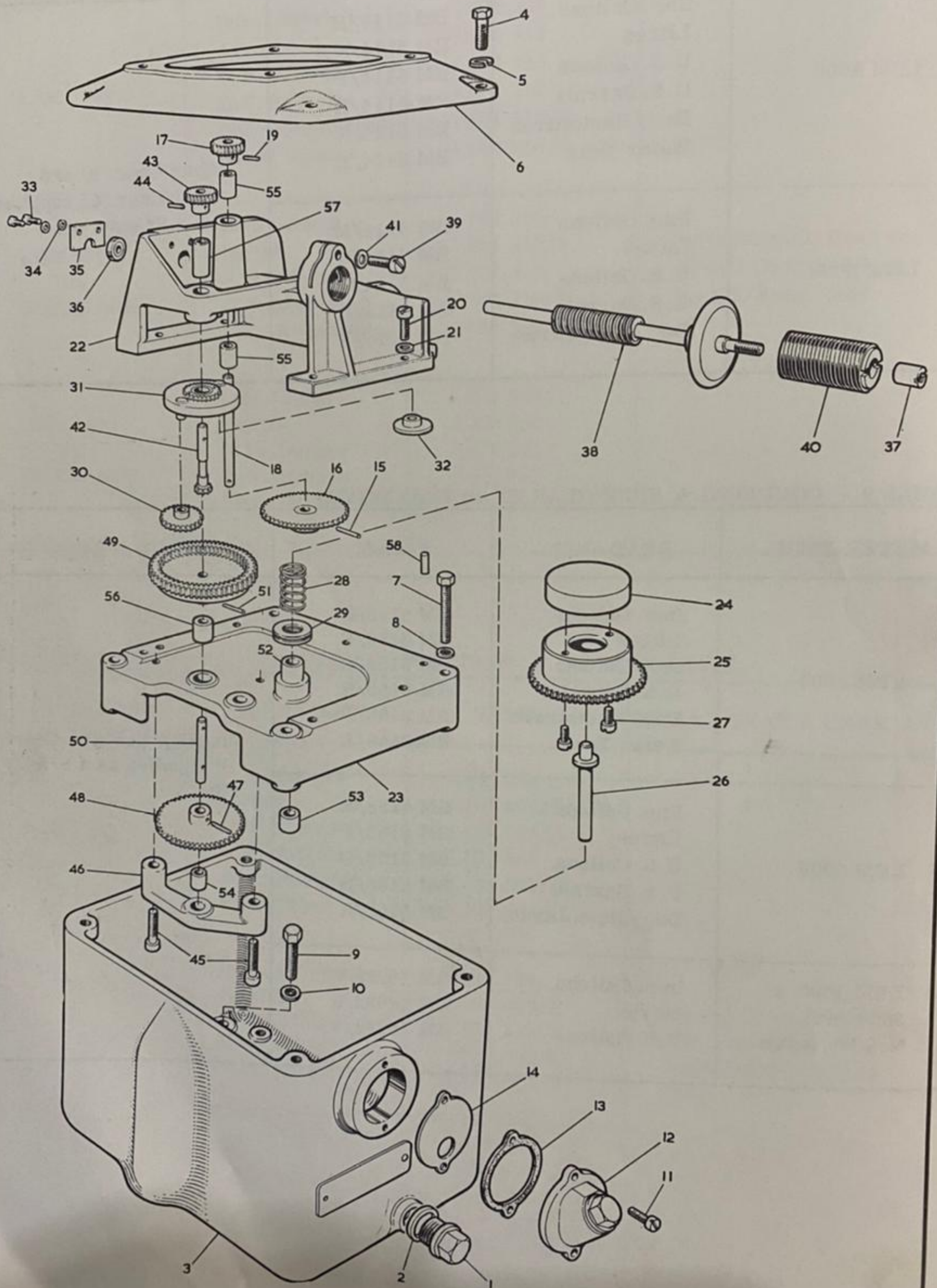


TABLE 3 - METER FRONT COVER ASSEMBLY PARTS LIST (Refer to Fig. 3)  
Recommended spares are indicated by \*

ITEM	DESCRIPTION	PART NO.	
1	Casing Cover	LBM 402	1
2	Bearing Hoffman Type 110 Metric	-	1
3	Primary Drive Shaft S/Assy.	LBM 422	1
4	Primary Drive Shaft	LBM 403	1
5	Compo Bush SN 012 x 3/8"lg.	-	1
6*	Bevel Gear	LBM 427	1
7	Tension Pin 1/8" x 5/8"lg.	-	1
8*	Coupling	BM 5165	1
9	Tension Pin 3/32" x 1"lg.	-	1
10	Washer	123/73	1
	Romet Seal Assy. Alternatives:		
	LH Discharge Meter	BM 3710/L	1
	RH Discharge Meter	BM 3710/R	1
11	Mating Face SC90 x 26 & 'O' Ring Seal SH96 - 204	-	1
12	Bearing	0121-1	1
13	Bearing Holder	LBM 405	1
14*	Bearing Holder Gasket	LBM 406	1
15	Screw 6-32 UNC x 7/16"lg. Fil. Hd.	-	4
16*	'O' Ring Seal (Non Dual Read-Out Meters)	TR13/B/66	1
17	Blanking Plate	LBM 407	1
18	Screw 10-24 UNC x 5/8"lg. Oval Hd.	-	4
19	Locknut	BM 5173	1
20	Blanking Plug (Non Temp. Comp. Cal. Mechs.)	BM 5737	1
21*	Cylinder Gasket	BM 5177	1
	The following parts are used on meters with temperature compensated calibrating mechanisms.		
22	Spiral Tube and Bellows S/Assy. Alternatives: -20°F to +140°F (-29°C to +60°C) +20°F to +180°F (-7°C to +82°C)	BM 5152 BM 10353	1 1
23	Clip 'Insuloid' NK3 x 5/16" dia.	-	4
24	Screw 6-32 UNC x 5/16"lg. Fil. Hd.	-	4
25	Bellows Spring	BM 5176	1
26	Plunger Guide and Bush S/Assy.	BM 5870	1
27	Fork	BM 7505	1
28	Screw 10-32 UNF x 5/8"lg. Skt. Hd.	-	1
29	Washer 10-UNC Int. Shakeproof	-	1
30	Fulcrum Pin	BM 5765	1
31*	Tension Pin 3/32" x 1/2"lg.	-	1
	The following parts are used on meters with temperature compensated calibrating mechanisms and dual read-out.		
32	Bush and Housing S/Assy.	LBM 425	1
33*	'O' Ring Seal	TR19/B/66	1
34*	Lip Seal 'Gaco' Type MIS 05	-	1
35	Romet Seal Assy. Alternatives: LH Discharge Meters RH Discharge Meters	BM 3710/L BM 3710/R	1 1



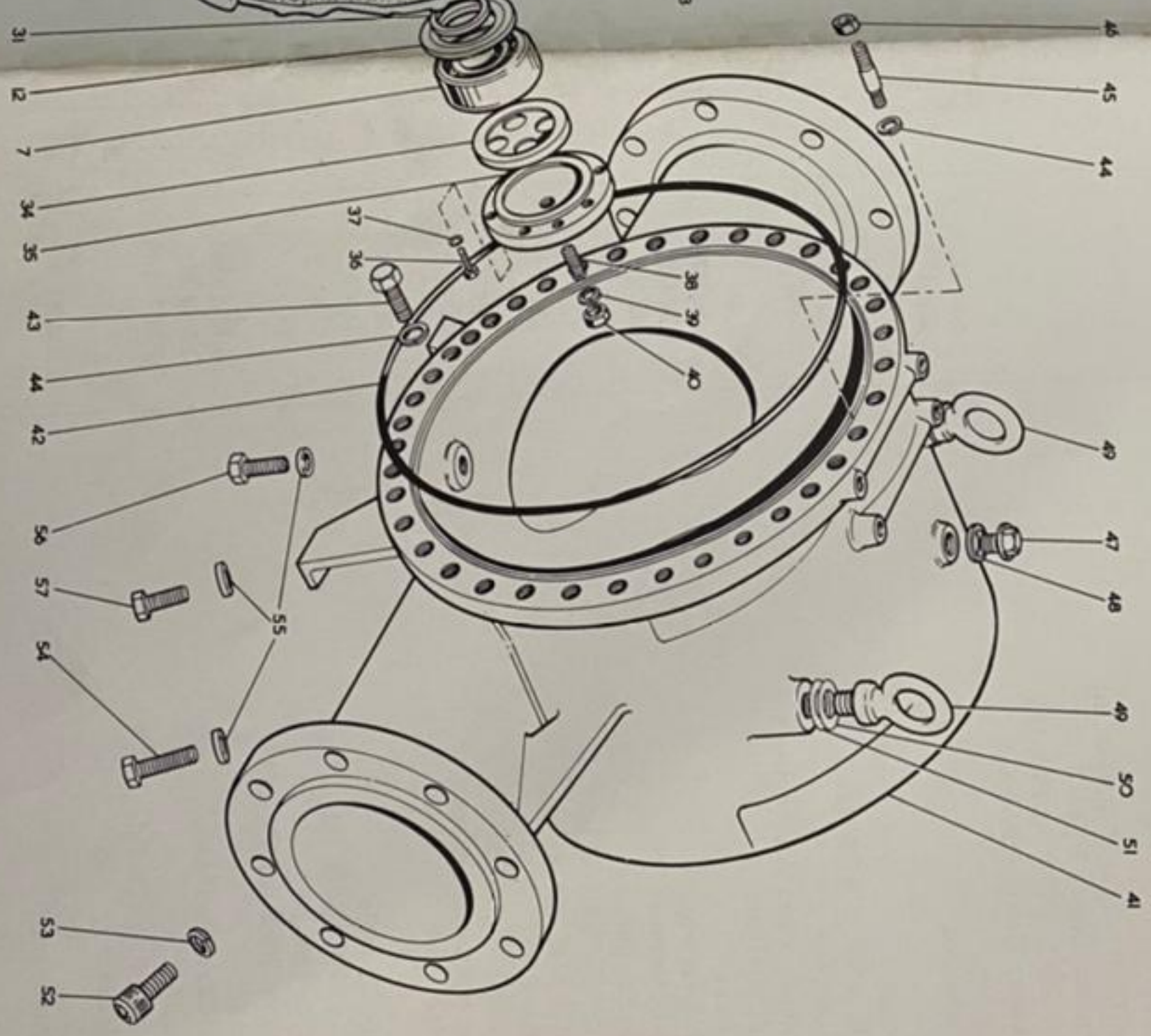
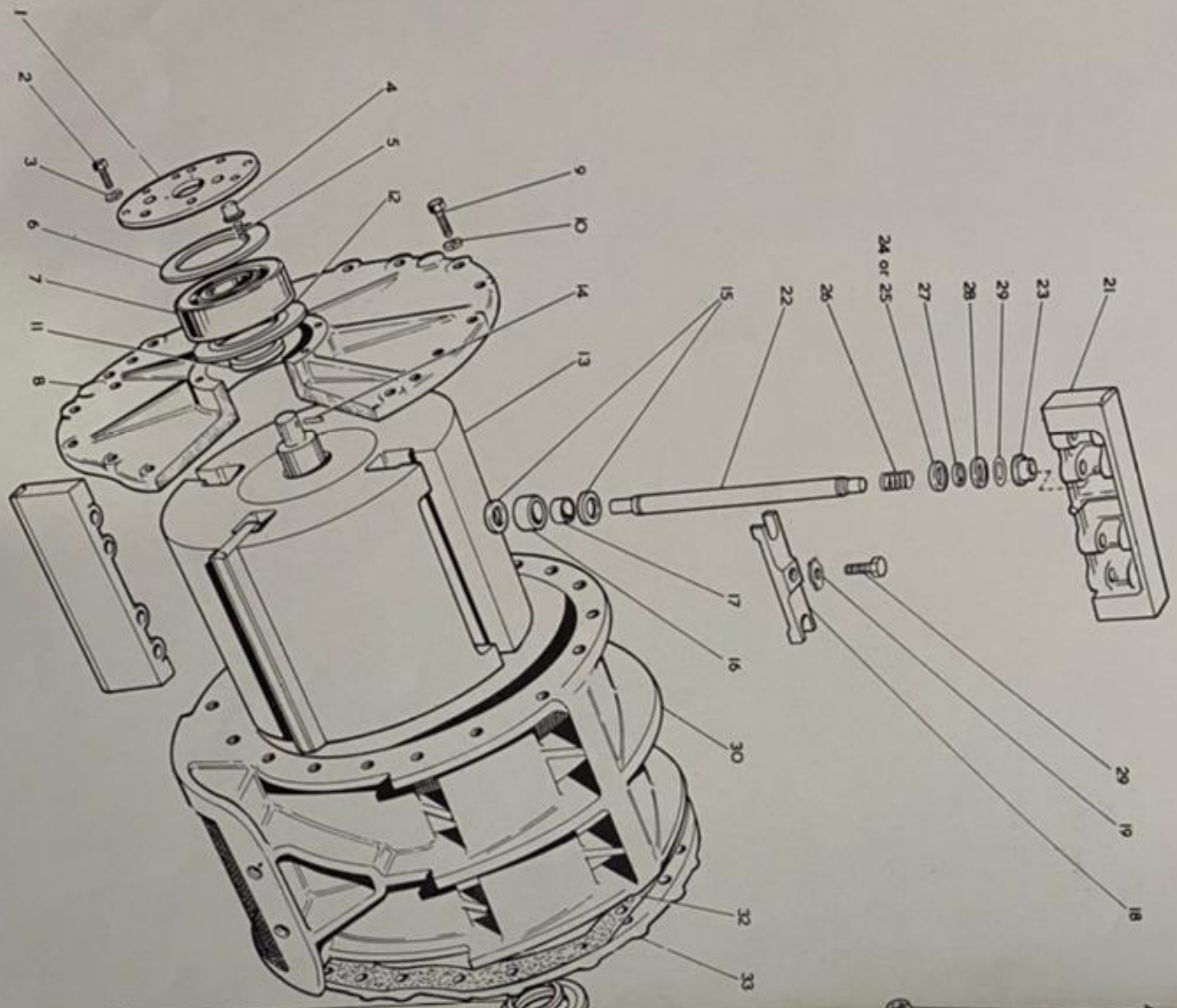
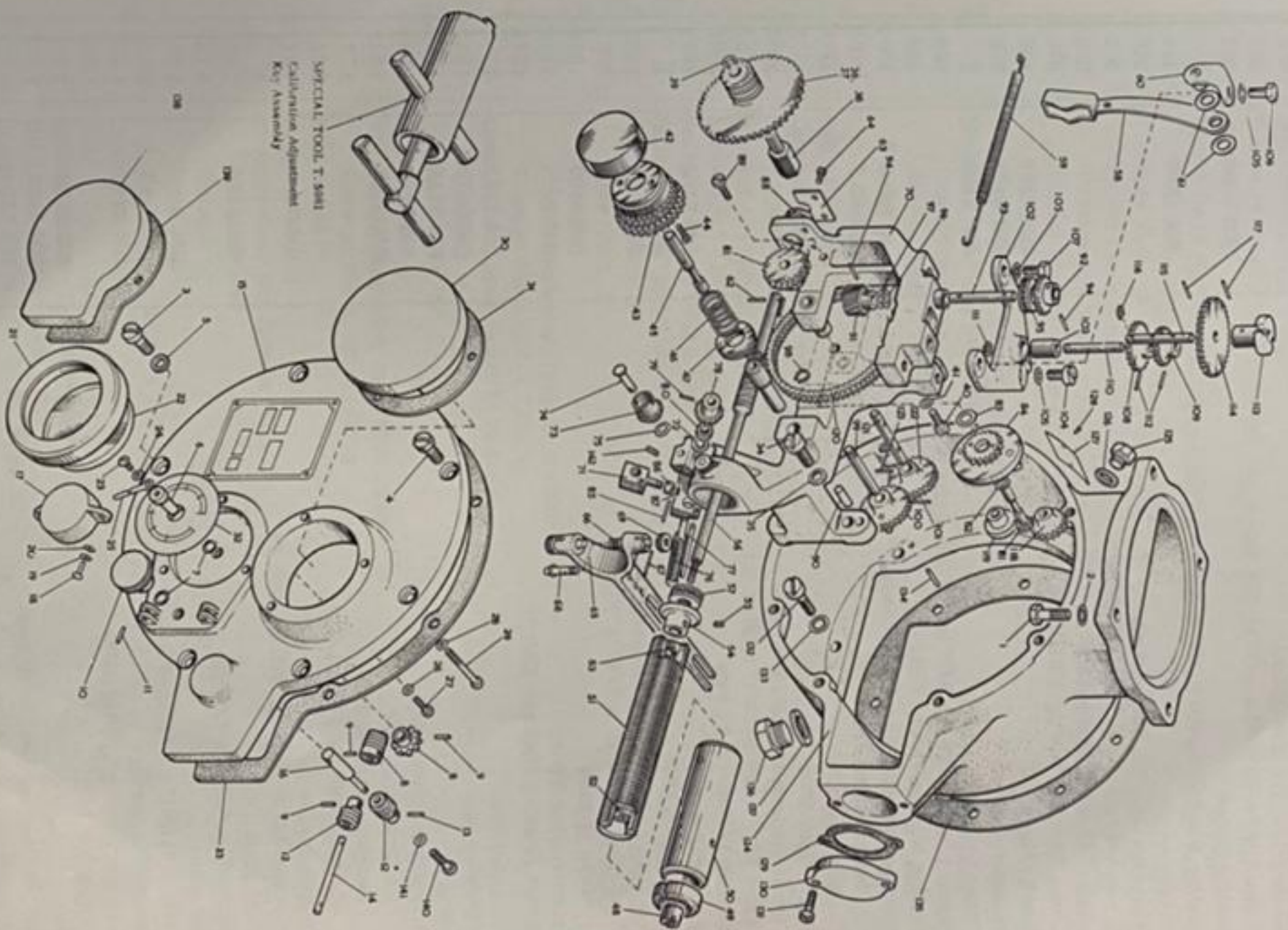
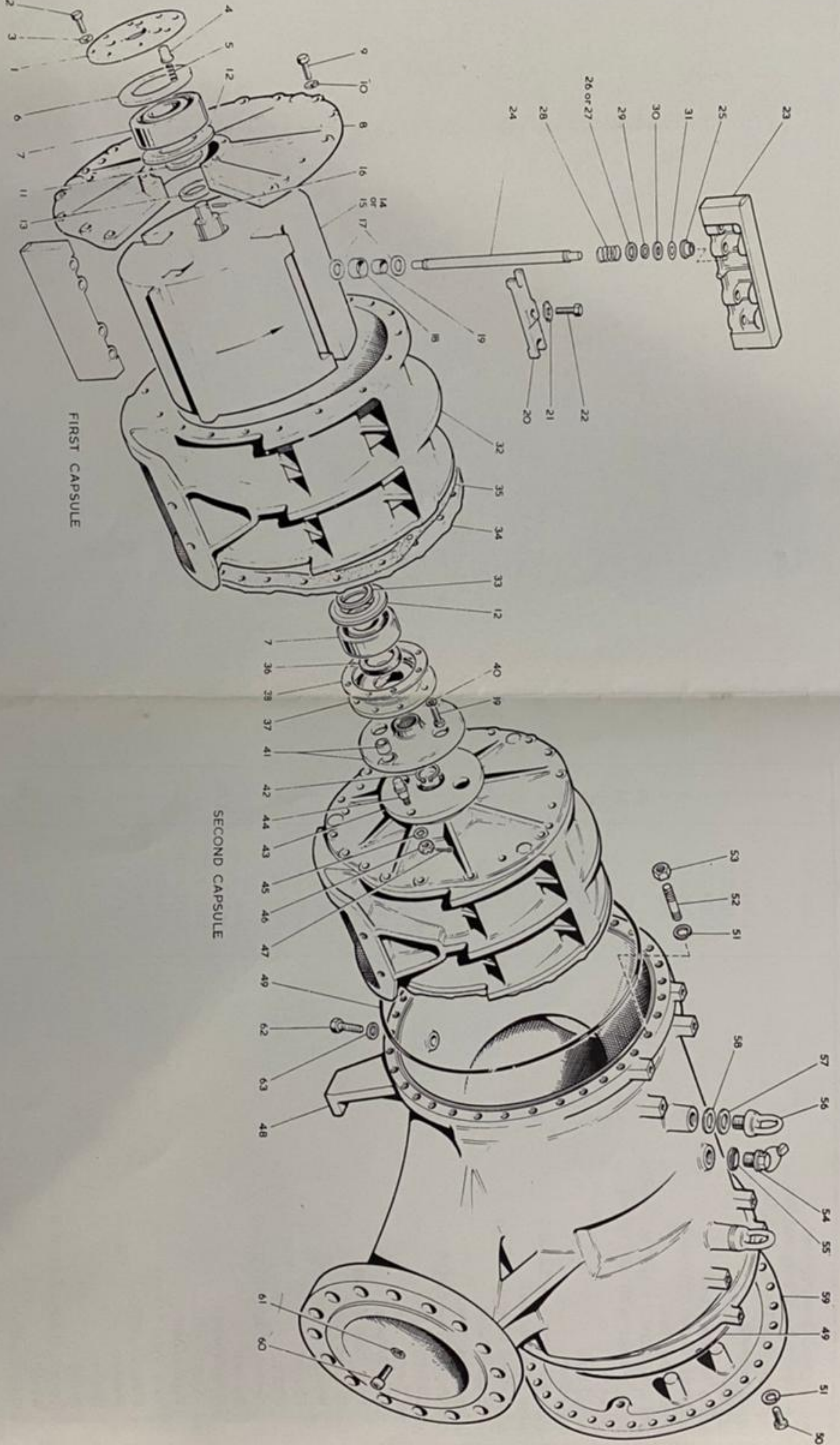


TABLE 3 - METER FRONT COVER ASSEMBLY PARTS LIST (Refer to Fig. 3)  
Recommended spares are indicated by \*

ITEM	DESCRIPTION	PART NO.	QTY.
36	Matng Face SC90 x 26 & 'O' Ring Seal SH96-204 Secondary Drive Shaft S/Assy. Alternatives:		
	Imp. Gallons	LBM 430	1
	Litres	LBM 431	1
	U. S. Gallons	LBM 432	1
	U. S. Barrels	LBM 433	1
37	Secondary Drive Shaft	LBM 424	1
38	Compo Bush SN 012 x 3/8" lg.	-	1
39	Bevel Gear	LBM 427	1
40 *	Tension Pin 1/8" x 5/8" lg.	-	1
41 *	Spur Gear Alternatives:		2
	Imp. Gallons	LBM 196	1
	Litres	LBM 209	1
	U. S. Gallons	LBM 213	1
	U. S. Barrels	LBM 196	1
42 *	Tension Pin 3/32" x 5/8" lg.	-	1
43	Collar	LBM 607	1
44	Set Screw 10-24 UNC x 1/4" lg. Skt. Hd.	-	1
45	Thrust Bearing Hoffman EW 3/8"	-	2
46	Bush Housing	LBM 423	1
47	Compo Bush CTE 174 x 5/8" lg.	-	1
48 *	Shim	LBM 408	A/R
49	Screw 1/4" - 20 UNC x 3/4" lg. Hex. Hd.	-	2
50	Washer 1/4" Ext. Shakeproof	-	2
51 *	Tension Pin 1/8" x 3/4" lg.	-	2

FIG. 4 - CALIBRATING MECHANISM EXPLODED VIEW (Refer to Tables 4 and 5)







LITRES  
00000

LITRES  
00000

DO NOT RESET WHILE RUNNING

DO

LITRES

LITRES

DO NOT RESET WHILE RUNNING

DO

LITRES

LITRES

DO NOT RESET WHILE RUNNING

DO

LITRES

LITRES

DO NOT RESET WHILE RUNNING

DO

LITRES

LITRES

DO NOT RESET WHILE RUNNING

DO

LITRES

LITRES

DO NOT RESET WHILE RUNNING

DO

LITRES

LITRES

DO NOT RESET WHILE RUNNING

DO